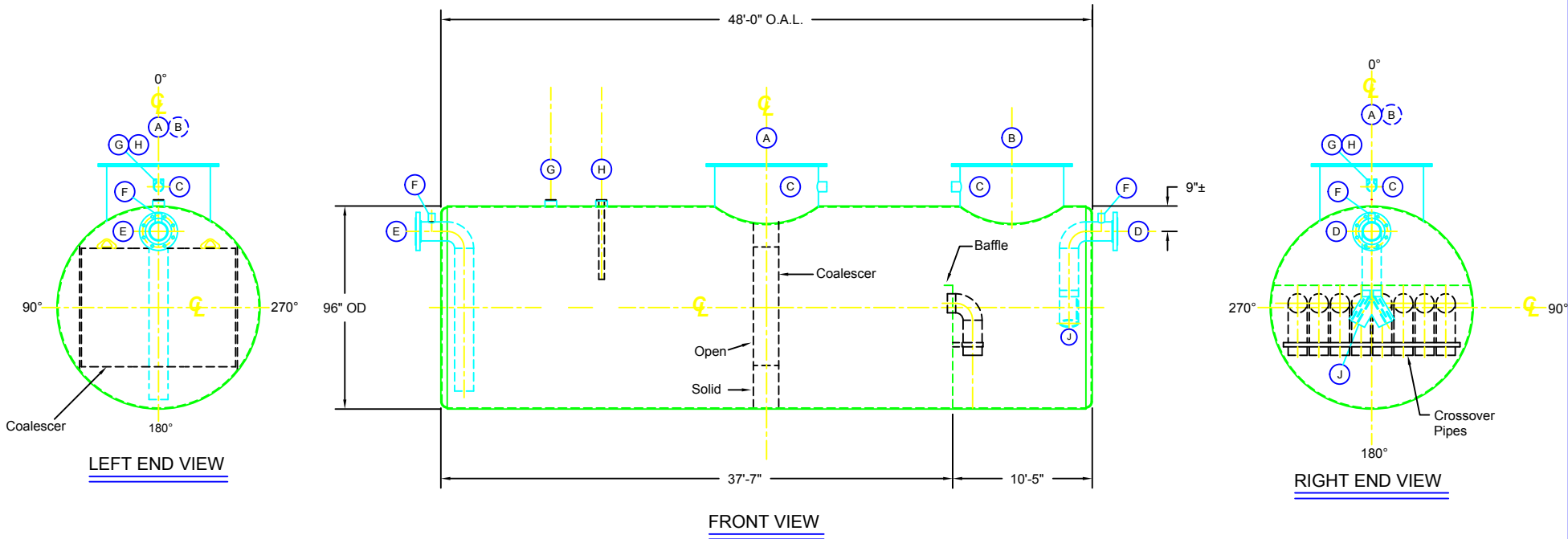


**NOTES:**

- A. Quantity: \_\_\_\_\_ Oil Water Separator(s).
- B. Material: Carbon Steel per UL-58.
- C. Design & Operating Pressure: Atmospheric.
- D. Design & Operating Temperature: 40 degrees to 120 degree F.
- E. Separator to be Built & Labeled Per UL 2215.
- F. Interior: Abrasive blast and lined with UL listed coating.
- G. Exterior: Corrosion protection per UL1746.
- H. Electronics: To be furnished by separator manufacturer as specified.
- I. All Fittings to be Protected for Shipment.
- J. Customer has the Responsibility to Verify all Dimensions.

**NOZZLE SCHEDULE**

QTY.	ITEM	SIZE	RATING	TYPE	MATL.	PROJ. IN	PROJ. OUT								NOTES
1	A	30"	PRESSED	MANWAY	C.S.	1/4"									VENT
1	B	24"	PRESSED	MANWAY	C.S.	1/4"	AS SHWN.								SLUDGE REMOVAL
2	C	2"	STD. NPT.	HF. CPLG.	C.S.	0"	AS SHWN.								VENT
1	D	12"	150# FLG.	S.O.R.F.	C.S.	1/4"	AS SHWN.								INLET
1	E	12"	150# FLG.	S.O.R.F.	C.S.	1/4"	AS SHWN.								OUTLET
2	F	2"	STD. NPT.	HF. CPLG.	C.S.	0"	AS SHWN.								VENT
1	G	2"	STD. NPT.	HF. CPLG.	C.S.	1/4"	AS SHWN.								OIL LEVEL CONTROL
1	H	2"	STD. NPT.	HF. CPLG.	C.S.	1/4"	AS SHWN.								OIL PUMP OUT
1	J	12"	STD. NPT.	"V"	C.S.	0"	0"								DIFFUSER



NO.	DESCRIPTION	DATE	NAME
<b>REVISIONS</b>			
<b>Modern Welding Company</b>			
VESSEL DESCRIPTION: 15,000 Gallon KlearWater Oil Water Separator Tank			
CUSTOMER:			P.O.#
DATE:	SCALE: N.T.S.	DWG.# VOWS15000KW	DRAWN BY: CHKD. BY:

**Disclaimer:**  
This drawing is provided for informational purposes only. Final size, flow rate, or efficiency will be determined at placement of order with the Modern Welding Company subsidiary which manufacturers the Klearwater separator. User takes full responsibility of the use and application of this illustration.